

Apresentação

Pegada Novos Talentos

Planejamento das oficinas



Universidade Federal do Rio de Janeiro

Escola de Belas Artes

Desenho Industrial

Laboratório de Design, Inovação e Sustentabilidade - **LABDIS**

Projeto Pegada nas Escolas

Conselho Nacional de Desenvolvimento Científico e Tecnológico – **CNPq**

Organização: Beany Guimarães Monteiro

Equipe atual (bolsistas PIBEX):

Anne Shayene

Cássia Oliveira

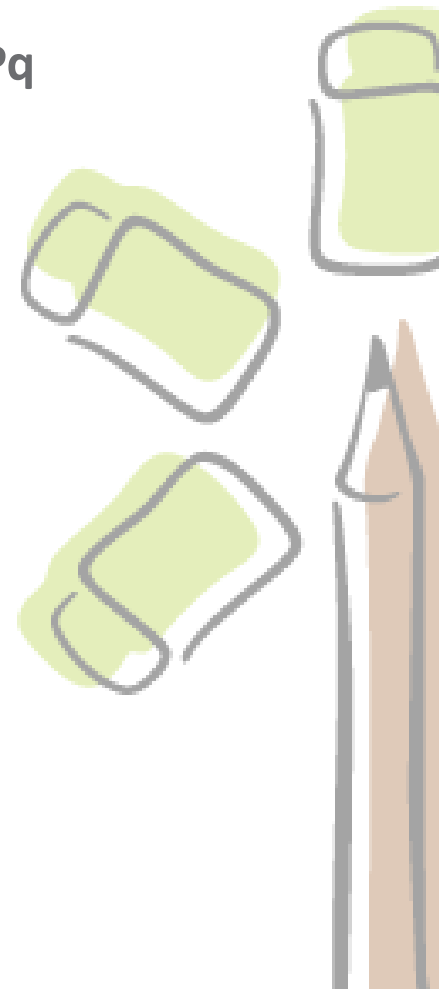
Gustavo Vieira

Laís Passos

Luiza Rougemont



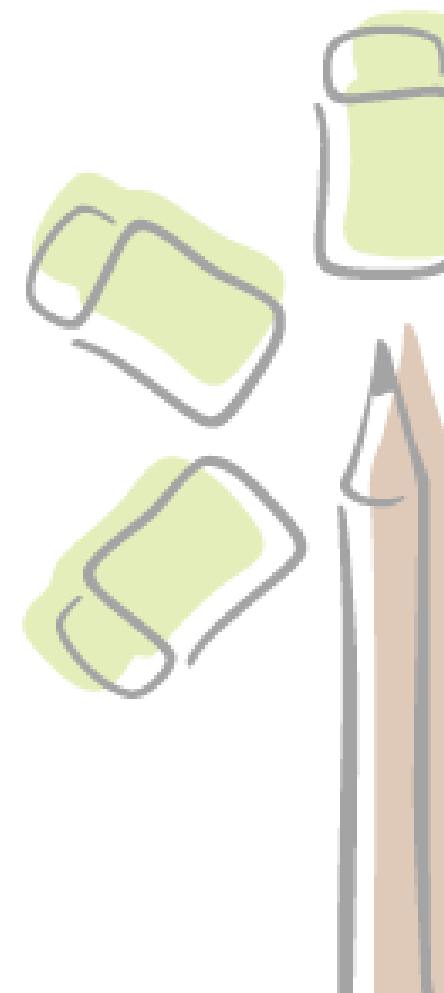
CAPES



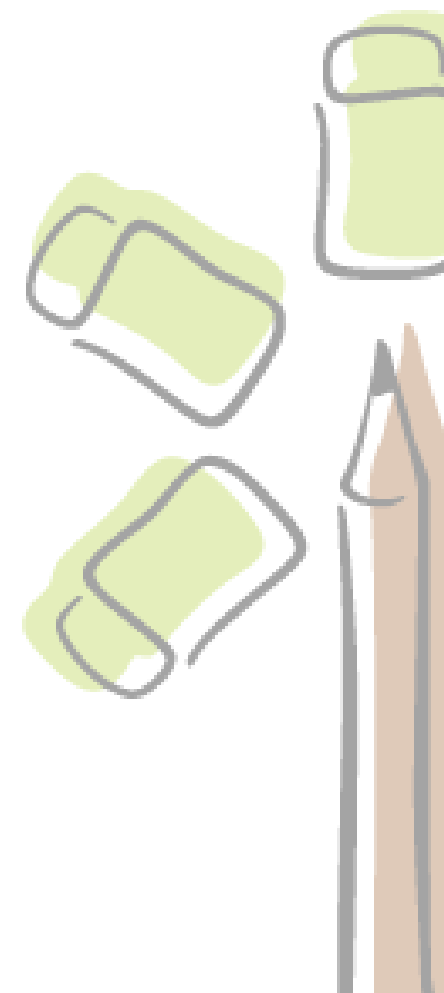
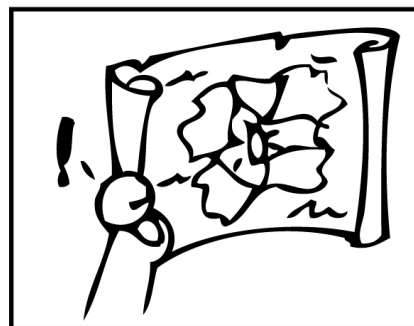
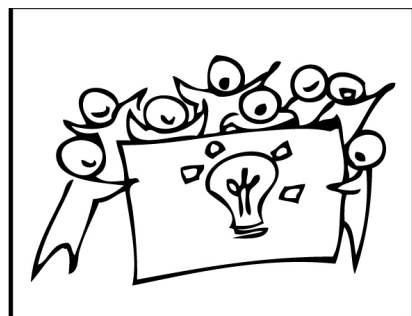
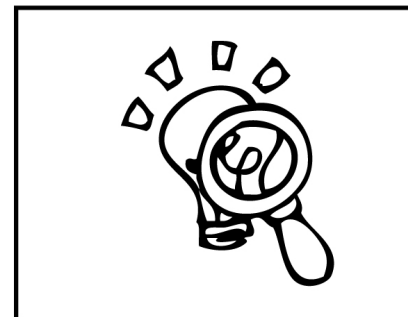
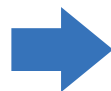
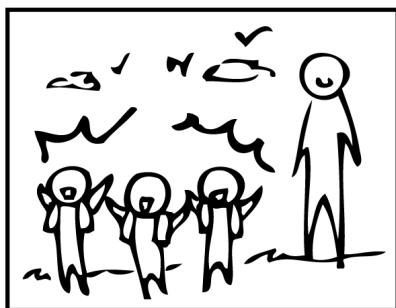
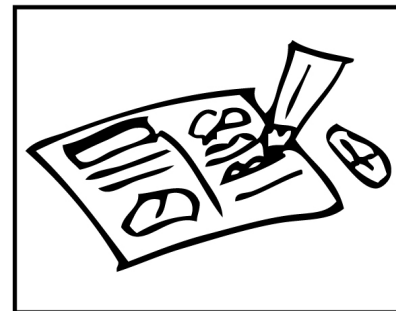
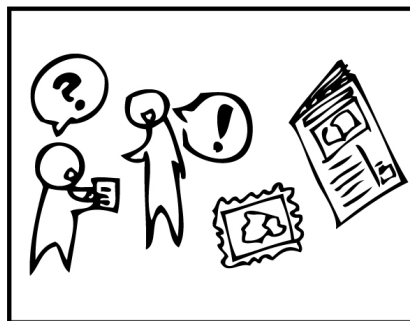
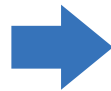
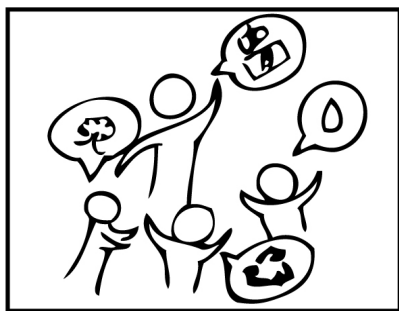
Apresentando

O Pegada com apoio do CNPq está dirigido para os estudantes do 6º ao 9º ano. No edital Novos Talentos da CAPES o público são os Jovens e Adultos do 2º grau (PEJA).

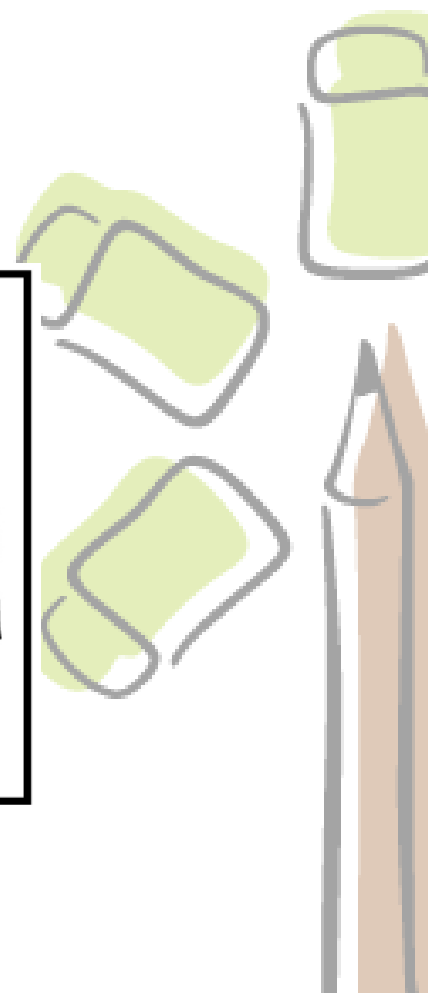
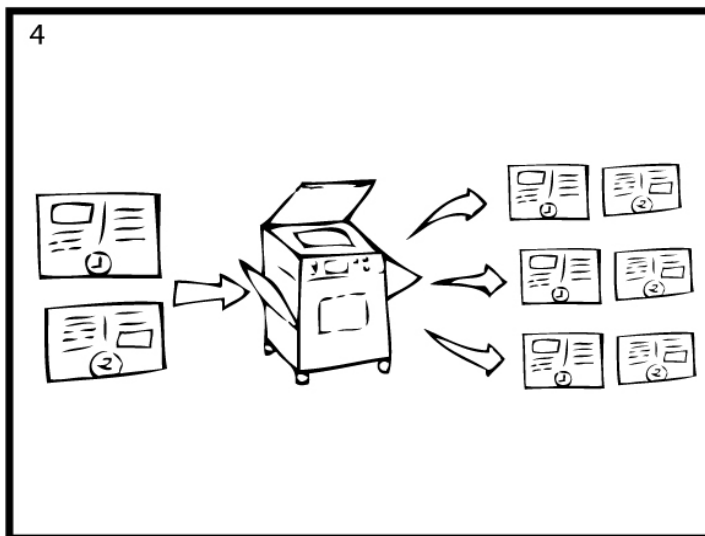
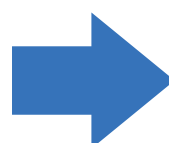
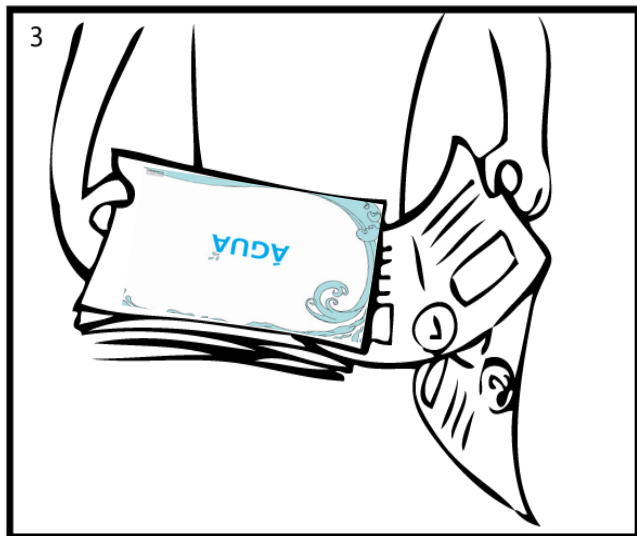
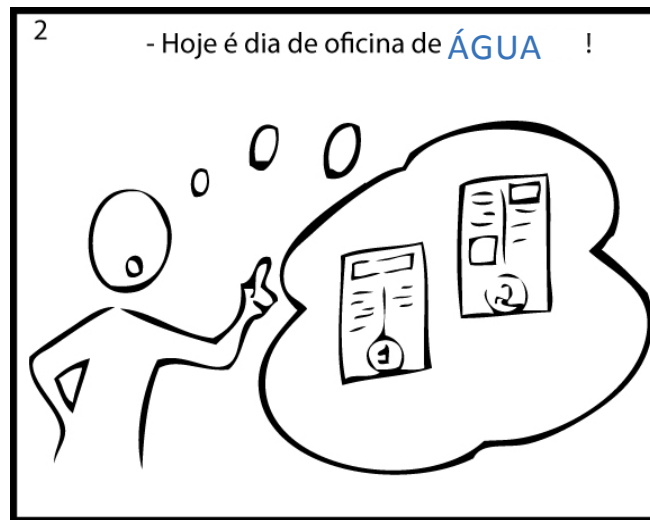
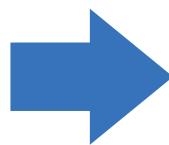
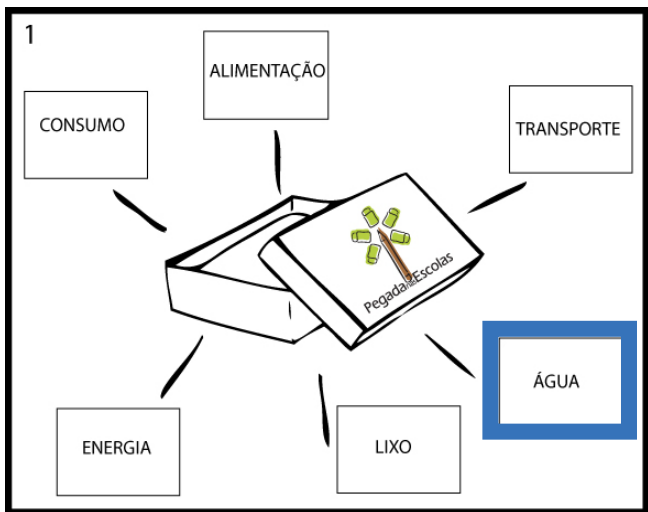
- ▶ Oficinas
- ▶ Material
- ▶ Mapa do Pegada

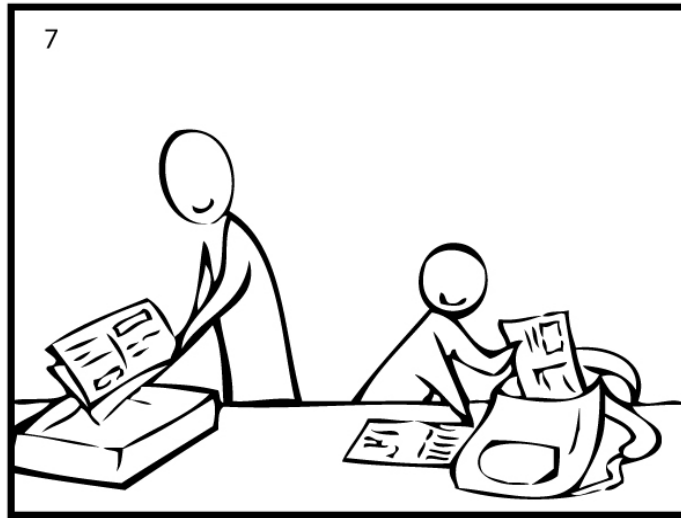
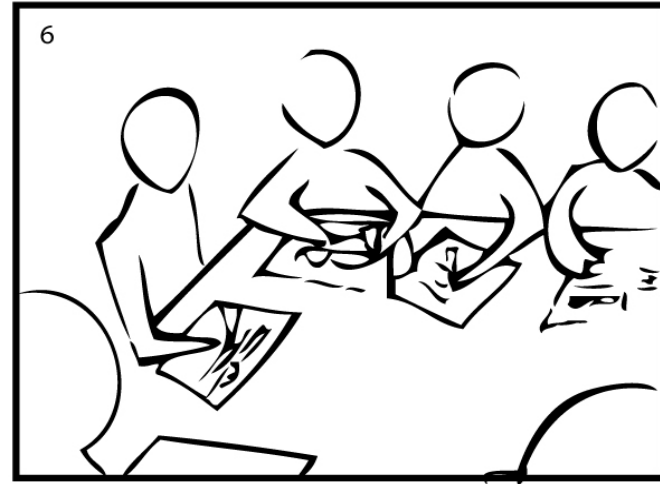
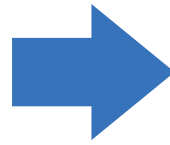
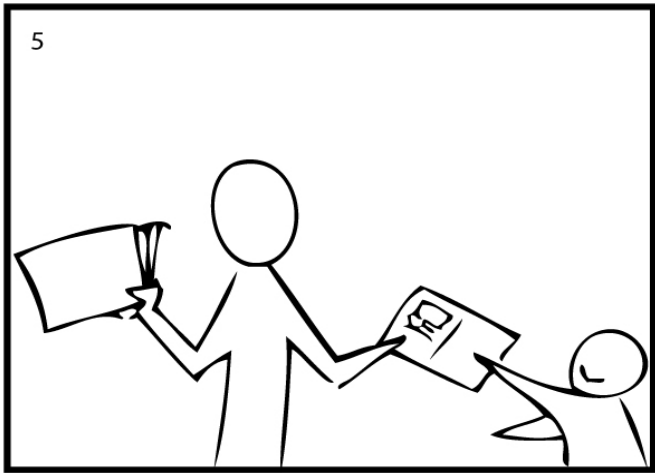


Oficinas:

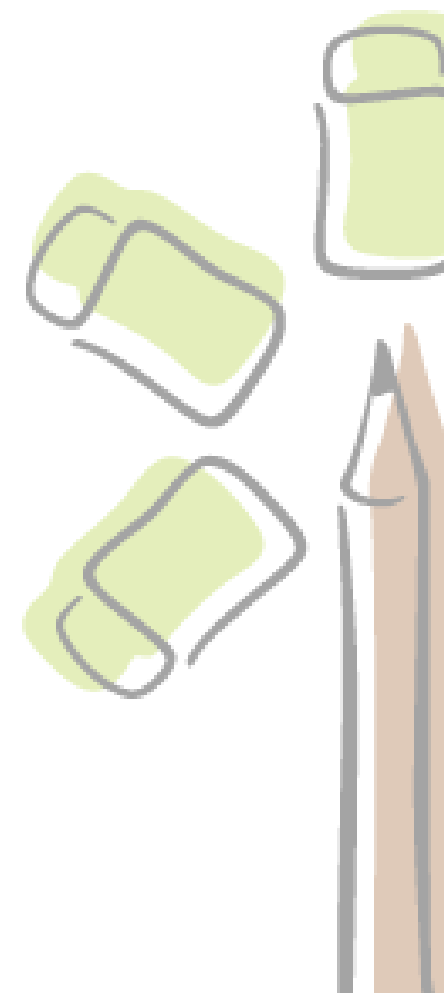
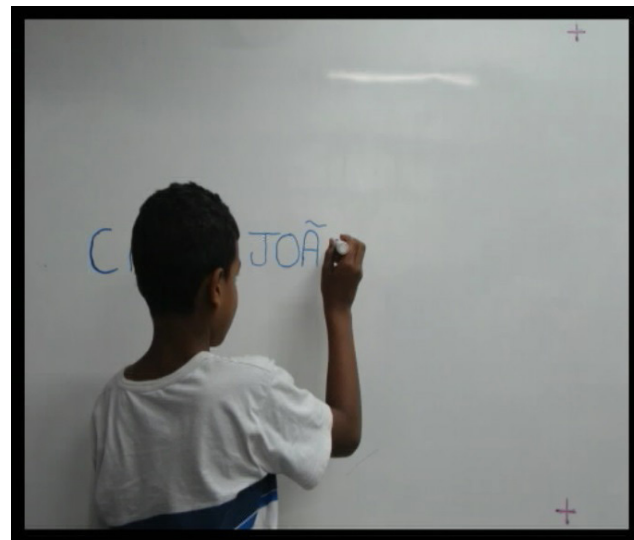


Caixa do Material:

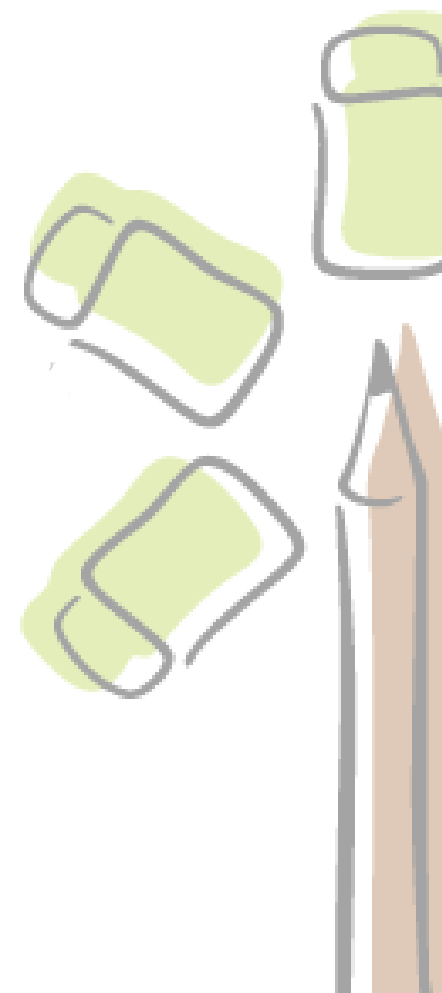
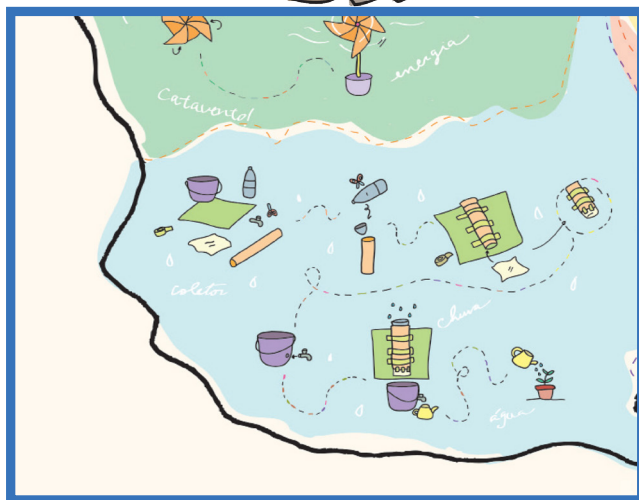
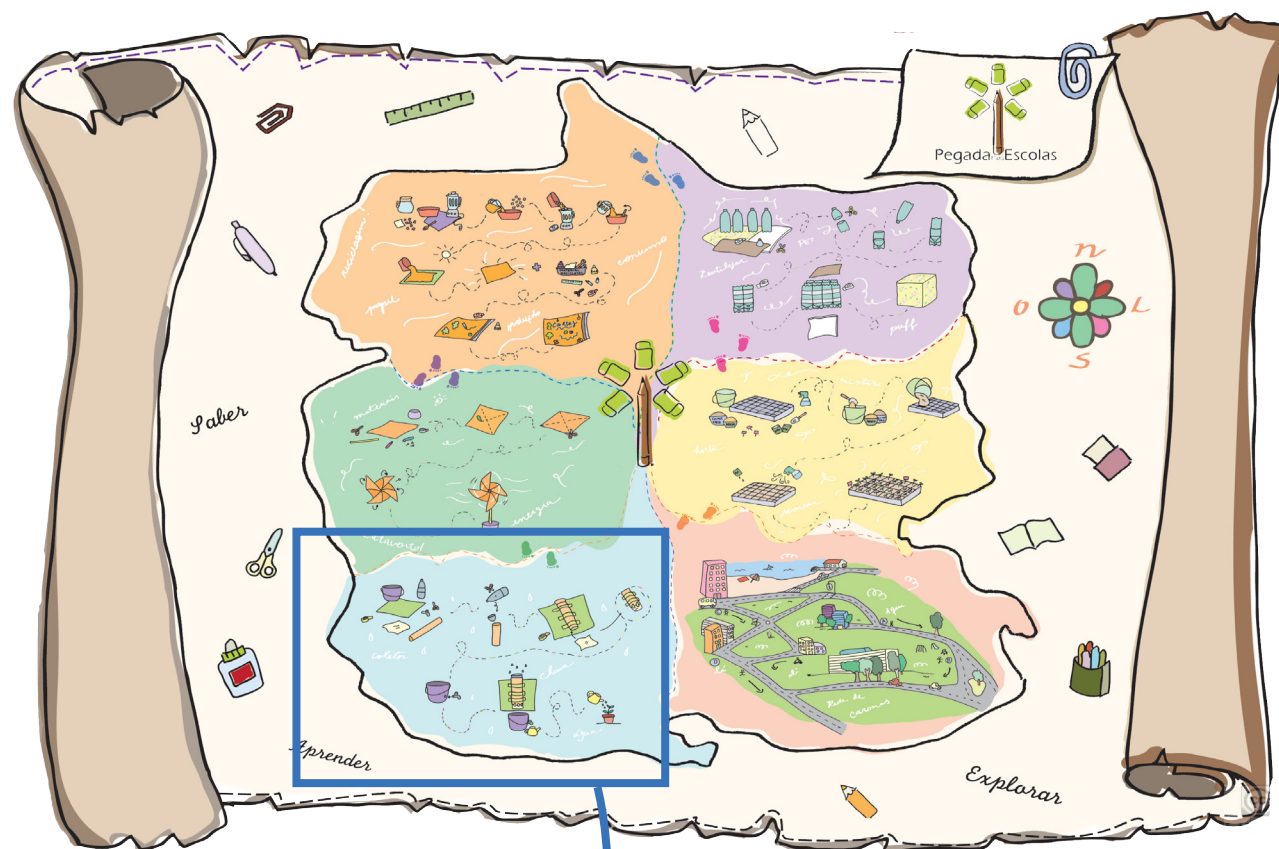




Animação da solução:



Mapa do pegada:



Desdobramentos:

As soluções geradas durante as oficinas serão incorporadas, através do mapa de soluções, à Rede Autônoma de Educação em Design.

Obrigado!

